



MUSEUM SHOP

Museum shop

We have a variety of products inspired by the Museum's collection, catalogues, home decor, small gifts and more.

Sample



English

大阪市立 東洋陶磁 美術館

THE MUSEUM OF ORIENTAL CERAMICS, OSAKA

The Museum of Oriental Ceramics, Osaka stands in the heart of metropolitan Osaka, peacefully embraced in the rich green and waters of the Nakanoshima Park.

Founded in November 1982, the Museum was established by the Osaka City to commemorate the donation of the world-renowned "Ataka Collection" by the companies of the Sumitomo Group.

In addition to the core "Ataka Collection" that comprises mostly Chinese and Korean ceramics, the Museum collection also includes Japanese ceramics as well as generous donations such as the Korean ceramics of the "Rhee Byung-Chang Collection" and works by Hamada Shoji, boasting as one of the finest collections of oriental ceramics in the world in terms of both quality and quantity. Among the collection, two works are registered as National Treasures and thirteen works as Important Cultural Properties of Japan.

In the galleries, we systematically display approximately four hundred notable pieces of Chinese, Korean and Japanese ceramics based on our original composition and display method. In addition to the permanent exhibition, we organize temporary exhibitions and special exhibitions once or twice a year covering specialized themes that highly maintain both academic and artistic quality, aiming at producing attractive exhibitions.

In order to ensure visitors a rich and peaceful atmosphere to truly enjoy the exhibition, the galleries are equipped with various useful devices including the natural-light-drawn display cases, displaying platform with a turntable or shock-absorbents.

Our Museum aims at contributing to the enrichment of artistic sensitivity and education by making the best use of our superb collection of oriental ceramics and providing rich aesthetic experiences.



CAFE

Cafe

You can unwind yourselves and enjoy the scenery of Nakanoshima in this cafe. Our special menu inspired by the ceramics collection of the museum is something you cannot miss.

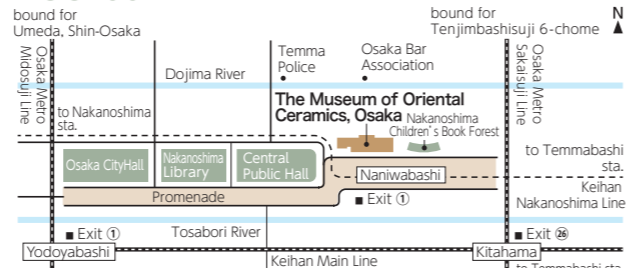


Coffee

Pottery motif cookies



ACCESS



bound for Umeda, Shin-Osaka
bound for Tenjimbashisuji 6-chome
bound for Nakanoshima sta.
bound for Namba, Tennoji
bound for Dobutsuen-mae, Tengachaya
bound for Kitahama
bound for Temmabashi sta.

INFORMATION

[Opening hours] 9:30 - 17:00 (Last admission 16:30)

[Closed days]

Mondays (open on national holidays-then will be closed on the following days)
New Year holidays/Period during change of exhibit

The Museum of Oriental Ceramics, Osaka
1-1-26, Nakanoshima, Kita-ku, Osaka 530-0005
TEL: +81-6-6223-0055 FAX: +81-6-6223-0057
URL: <https://www.moco.or.jp>

Official Website



Buy Tickets



QR Translator

日本語 English 日本語
Français Français Bahasa Indonesia
简体中文 Español Bahasa Indonesia
繁體中文 Deutsch Tiếng Việt



SCAN QR Scan to learn about The Museum of Oriental Ceramics, Osaka in multiple languages.



CHINESE CERAMICS



FIGURINE OF A LADY, earthenware with painted decoration
Tang dynasty, 8th century
Gift of SUMITOMO Group, the ATAKA Collection



Important Cultural Property
BASIN, white porcelain with carved lotus design
Northern Song dynasty, 11th-12th century
Ding ware
Gift of SUMITOMO Group, the ATAKA Collection



NARCISSUS BASIN, celadon
Northern Song dynasty, Late 11th-early 12th century Ru ware
Gift of SUMITOMO Group, the ATAKA Collection

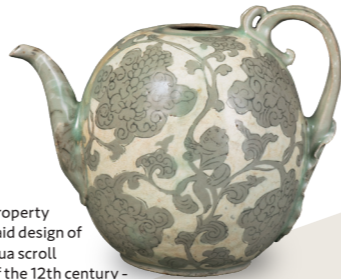


Important Cultural Property
DISH, blue-and-white porcelain with peony scroll design
Yuan dynasty, 14th century Jingdezhen ware
Gift of Mr. TOHATA Kenzo



BOWL, blue-and-white porcelain with aibika(hollyhock) design
Ming dynasty, Chenghua mark and period (1465-1487) Jingdezhen ware
Gift of SUMITOMO Group, the ATAKA Collection

KOREAN CERAMICS



Important Cultural Property
EWER, celadon with inlaid design of boys and baoxianghua scroll
Goryeo dynasty, second half of the 12th century - first half of the 13th century
Gift of SUMITOMO Group, the ATAKA Collection



RITUAL VESSEL FU, buncheong ware with overall slip-coating, (kohiki)
Joseon dynasty, 15th century
Gift of SUMITOMO Group, the ATAKA Collection



BEVELED BOTTLE, blue-and-white porcelain with floral plant design
Joseon dynasty, first half of the 18th century
Gift of SUMITOMO Group, the ATAKA Collection



JAR, porcelain with bird and plum tree design painted in underglaze iron brown
Joseon dynasty, second half of the 17th century
Gift of Dr. RHEE Byung-chang



JAR, porcelain with lotus design in underglaze cobalt-blue and copper-red paint
Joseon dynasty, second half of the 18th century
Gift of Mr. ATAKA Eiichi

JAPANESE CERAMICS



Important Cultural Property
JAR, earthenware with three-color glaze
Nara period, 8th Century
Gift of SUMITOMO Group, the ATAKA Collection



OCTAGONAL JAR, porcelain with design of peony and camellia in overglaze enamels
Edo period, 1680-1710s
Arita ware, Hizen

NATIONAL TREASURES



National Treasure
TEA BOWL (Yuteki Tenmoku), stoneware with "oil spots" and iridescent luster on tenmoku glaze
Southern Song dynasty, 12th-13th century Jian ware
Gift of SUMITOMO Group, the ATAKA Collection



National Treasure
BOTTLE, celadon with iron brown spots
Yuan dynasty, 14th century Longquan ware
Gift of SUMITOMO Group, the ATAKA Collection

FLOOR MAP

